

4

3

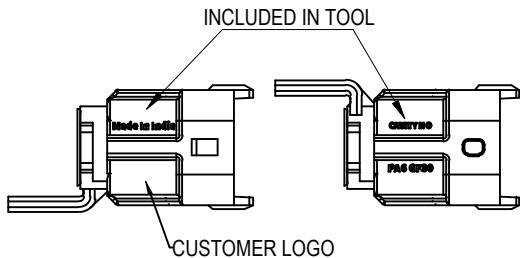
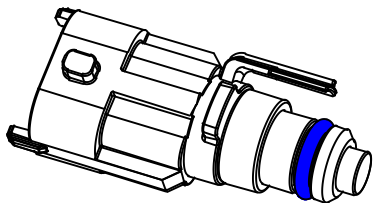
2

1

PART TO BE COMPLIANT WITH DIRECTIVE 2015/863/EU (ROHS) & EC 1907/2006 (REACH) OF THE EUROPEAN PARLIAMENT.

Rev No / ZONE	Date	Change	ECN
2	10.11.25	RE-DRAWN.	

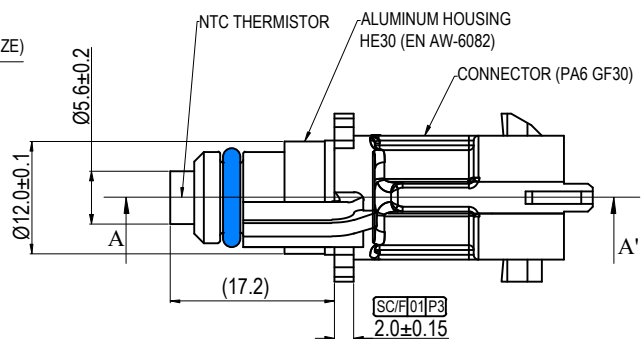
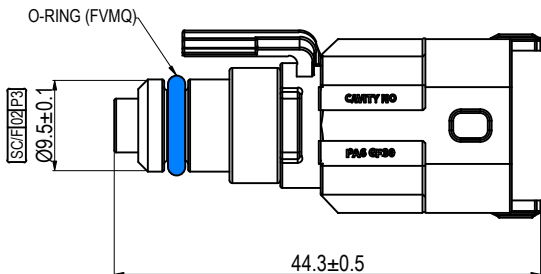
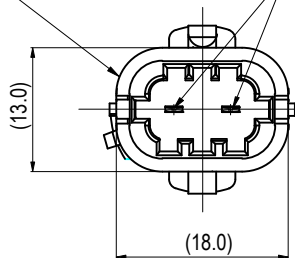
1.	Max weight Allowed	20 Kg
SI No	PACKING DESCRIPTION	SPECIFICATION



MARKING DETAILS

MATING CONNECTOR PART NO.
PLUG HOUSING
BOSCH # A 928 000 453 CODING 1
ORDER NO 928 403 874

TERMINAL (2.8X0.8)x2
(PHOSPHOROUS BRONZE)



ELECTRICAL SPECIFICATIONS:-

1. RESISTANCE AT 25°C : 2057.0Ω ± 4.89%
2. INSULATION RESISTANCE : >100MΩ AT 500V DC
3. RESPONSE TIME (63.2%) : <15 SECS (WATER) 25/90°C
4. OPERATING TEMPERATURE : - 40 TO 140°C
5. STORAGE TEMPERATURE : -30 TO 60°C

NOTE:

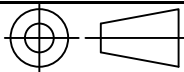
1. TECHNICAL SPECIFICATIONS ACCORDING TO - TDS/NPD/01
2. MOUNTING TORQUE : 4 N-m MAX.
3. PART WEIGHT: 7 grms APPROX.
4. TEST REPORT TO BE PROVIDED TO CUSTOMER WITH EVERY DISPATCH.
5. '()' REFERENCE DIMENSIONS USUALLY WITHOUT TOLERANCE THAT IS USED FOR INFORMATION PURPOSE ONLY. IT DOES NOT GOVERN PRODUCTION OR INSPECTION OPERATIONS.

BILL OF MATERIALS:

SL.NO	PART DESCRIPTION	ExTI REF DOC #	QTY
1	NTC THERMISTOR	TP/T/22729	01
2	ALUMINIUM HOUSING	TP/M/21318C	01
3	TERMINALS	TP/T/21316	02
4	'O' RING (FVMQ)	TP/M/22740	01
5	MOULD MATERIAL [ZYTEL 73G30 HSL BK 416 PA6-GF30]	TM/D/913	~10gm

A

EXA THERMOMETRICS
AN AMPHENOL COMPANY



SCALE		UNITS		SHEET	
NTS		mm		1 OF 2	
SPECIFIED					
115	1000	2000	ANGLE (°)		
000	2000	-	RIGHT	1	
0.4	1.0	2.0	OTHER	1.5	

DRAWING NO:
TP/A/22700

PART NAME:
TEMPERATURE SENSOR

ExTI PART NO:
I-2585

CUSTOMER:

CUST. PART NO.:

SPECIAL CHARACTERISTICS

TOTAL NUMBER OF SPECIAL CHARACTERISTICS:
SC/S - SPECIAL CHARACTERISTICS RELATED TO SAFETY = 0
SC/L - SPECIAL CHARACTERISTICS RELATED TO LEGAL AND REGULATORY = 0
SC/F - SPECIAL CHARACTERISTICS RELATED TO FUNCTIONS = 02

10.11.25	3	VSN	GPM	IB
13.09.19	2	SHA	GPM	IB
DATE	ISSUE	DRAWN	CHECKED	APPROVED

The copyright of this Specification / Drawing is the property of Exa Thermometrics and it is issued on the condition that it is not to be copied / reprinted or stored in any electronic retrieval system nor its contents disclosed either wholly or in part to any third party without the consent in writing or with the conditions of a contract .

4

3

2

1



ALL DEVICE CORPORATION

5-5-71 Kamagaya, Kamagaya-shi, Chiba 273-0105 Japan

Tel:81-47-489-5939 Email:info@all-device.com

4	3	2	1																																																																																																																																																																																																																																																				
PART TO BE COMPLIANT WITH DIRECTIVE 2015/863/EU (ROHS) & EC 1907/2006 (REACH) OF THE EUROPEAN PARLIAMENT.		Rev No / ZONE	Date	Change			ECN																																																																																																																																																																																																																																																
<table border="1" style="width:100%; border-collapse: collapse;"> <tr> <td style="width:20%;">1. Max weight Allowed</td> <td style="width:80%;">20 Kg</td> </tr> <tr> <td>SI No</td> <td>PACKING DESCRIPTION</td> </tr> <tr> <td></td> <td>SPECIFICATION</td> </tr> </table>		1. Max weight Allowed	20 Kg	SI No	PACKING DESCRIPTION		SPECIFICATION	<div style="border: 1px solid red; padding: 2px; display: inline-block;">2</div>	10.11.25	RE-DRAWN.																																																																																																																																																																																																																																													
1. Max weight Allowed	20 Kg																																																																																																																																																																																																																																																						
SI No	PACKING DESCRIPTION																																																																																																																																																																																																																																																						
	SPECIFICATION																																																																																																																																																																																																																																																						
<div style="display: flex; justify-content: space-between;"> <div style="width: 25%;"> <p style="text-align: center;">RvT CHARACTERISTICS</p> </div> <div style="width: 50%;"> <table border="1" style="width:100%; border-collapse: collapse; font-size: 0.8em;"> <thead> <tr> <th>Temp°C</th> <th>Resistance Nom (Ω)</th> <th>Resistance Min (Ω)</th> <th>Resistance Max (Ω)</th> <th>Resistance Tol (±%)</th> <th>Temp Tol (±°C)</th> </tr> </thead> <tbody> <tr><td>-40</td><td>46139</td><td>42357</td><td>49921</td><td>8.20</td><td>1.4</td></tr> <tr><td>-35</td><td>34587</td><td>31863</td><td>37312</td><td>7.88</td><td>1.4</td></tr> <tr><td>-30</td><td>26176</td><td>24194</td><td>28158</td><td>7.57</td><td>1.4</td></tr> <tr><td>-25</td><td>19991</td><td>18536</td><td>21446</td><td>7.28</td><td>1.4</td></tr> <tr><td>-20</td><td>15401</td><td>14323</td><td>16479</td><td>7.00</td><td>1.4</td></tr> <tr><td>-15</td><td>11964</td><td>11159</td><td>12769</td><td>6.73</td><td>1.4</td></tr> <tr><td>-10</td><td>9368</td><td>8763</td><td>9974</td><td>6.47</td><td>1.3</td></tr> <tr><td>-5</td><td>7392</td><td>6932</td><td>7851</td><td>6.21</td><td>1.3</td></tr> <tr><td>0</td><td>5875</td><td>5524</td><td>6226</td><td>5.97</td><td>1.3</td></tr> <tr><td>5</td><td>4702</td><td>4432</td><td>4972</td><td>5.74</td><td>1.3</td></tr> <tr><td>10</td><td>3788</td><td>3580</td><td>3997</td><td>5.52</td><td>1.3</td></tr> <tr><td>15</td><td>3072</td><td>2909</td><td>3235</td><td>5.30</td><td>1.3</td></tr> <tr><td>20</td><td>2505</td><td>2378</td><td>2633</td><td>5.09</td><td>1.3</td></tr> <tr><td>25</td><td>2057</td><td>1956</td><td>2158</td><td>4.89</td><td>1.3</td></tr> <tr><td>30</td><td>1698</td><td>1618</td><td>1777</td><td>4.69</td><td>1.2</td></tr> <tr><td>35</td><td>1409</td><td>1345</td><td>1472</td><td>4.50</td><td>1.2</td></tr> <tr><td>40</td><td>1175</td><td>1124</td><td>1226</td><td>4.32</td><td>1.2</td></tr> <tr><td>45</td><td>985</td><td>944</td><td>1026</td><td>4.14</td><td>1.2</td></tr> <tr><td>50</td><td>830</td><td>797</td><td>863</td><td>3.97</td><td>1.2</td></tr> <tr><td>55</td><td>702</td><td>676</td><td>729</td><td>3.80</td><td>1.2</td></tr> <tr><td>60</td><td>597</td><td>575</td><td>619</td><td>3.64</td><td>1.2</td></tr> <tr><td>65</td><td>510</td><td>492</td><td>527</td><td>3.48</td><td>1.1</td></tr> <tr><td>70</td><td>437</td><td>422</td><td>451</td><td>3.33</td><td>1.1</td></tr> <tr><td>75</td><td>376</td><td>364</td><td>388</td><td>3.18</td><td>1.1</td></tr> <tr><td>80</td><td>325</td><td>315</td><td>334</td><td>3.04</td><td>1.0</td></tr> <tr><td>85</td><td>281</td><td>273</td><td>290</td><td>2.90</td><td>1.0</td></tr> <tr><td>90</td><td>245</td><td>238</td><td>252</td><td>2.76</td><td>1.0</td></tr> <tr><td>95</td><td>214</td><td>208</td><td>219</td><td>2.63</td><td>1.0</td></tr> <tr><td>100</td><td>187</td><td>183</td><td>192</td><td>2.50</td><td>1.0</td></tr> <tr><td>105</td><td>165</td><td>160</td><td>169</td><td>2.63</td><td>1.0</td></tr> <tr><td>110</td><td>145</td><td>141</td><td>149</td><td>2.75</td><td>1.1</td></tr> <tr><td>115</td><td>128</td><td>125</td><td>132</td><td>2.87</td><td>1.2</td></tr> <tr><td>120</td><td>114</td><td>110</td><td>117</td><td>2.98</td><td>1.2</td></tr> <tr><td>125</td><td>101</td><td>98</td><td>104</td><td>3.10</td><td>1.3</td></tr> <tr><td>130</td><td>90</td><td>87</td><td>93</td><td>3.21</td><td>1.4</td></tr> <tr><td>135</td><td>80</td><td>78</td><td>83</td><td>3.31</td><td>1.5</td></tr> <tr><td>140</td><td>72</td><td>70</td><td>75</td><td>3.42</td><td>1.6</td></tr> <tr><td>145</td><td>65</td><td>62</td><td>67</td><td>3.52</td><td>1.7</td></tr> <tr><td>150</td><td>58</td><td>56</td><td>60</td><td>3.62</td><td>1.7</td></tr> </tbody> </table> </div> <div style="width: 20%;"></div> </div>								Temp°C	Resistance Nom (Ω)	Resistance Min (Ω)	Resistance Max (Ω)	Resistance Tol (±%)	Temp Tol (±°C)	-40	46139	42357	49921	8.20	1.4	-35	34587	31863	37312	7.88	1.4	-30	26176	24194	28158	7.57	1.4	-25	19991	18536	21446	7.28	1.4	-20	15401	14323	16479	7.00	1.4	-15	11964	11159	12769	6.73	1.4	-10	9368	8763	9974	6.47	1.3	-5	7392	6932	7851	6.21	1.3	0	5875	5524	6226	5.97	1.3	5	4702	4432	4972	5.74	1.3	10	3788	3580	3997	5.52	1.3	15	3072	2909	3235	5.30	1.3	20	2505	2378	2633	5.09	1.3	25	2057	1956	2158	4.89	1.3	30	1698	1618	1777	4.69	1.2	35	1409	1345	1472	4.50	1.2	40	1175	1124	1226	4.32	1.2	45	985	944	1026	4.14	1.2	50	830	797	863	3.97	1.2	55	702	676	729	3.80	1.2	60	597	575	619	3.64	1.2	65	510	492	527	3.48	1.1	70	437	422	451	3.33	1.1	75	376	364	388	3.18	1.1	80	325	315	334	3.04	1.0	85	281	273	290	2.90	1.0	90	245	238	252	2.76	1.0	95	214	208	219	2.63	1.0	100	187	183	192	2.50	1.0	105	165	160	169	2.63	1.0	110	145	141	149	2.75	1.1	115	128	125	132	2.87	1.2	120	114	110	117	2.98	1.2	125	101	98	104	3.10	1.3	130	90	87	93	3.21	1.4	135	80	78	83	3.31	1.5	140	72	70	75	3.42	1.6	145	65	62	67	3.52	1.7	150	58	56	60	3.62	1.7
Temp°C	Resistance Nom (Ω)	Resistance Min (Ω)	Resistance Max (Ω)	Resistance Tol (±%)	Temp Tol (±°C)																																																																																																																																																																																																																																																		
-40	46139	42357	49921	8.20	1.4																																																																																																																																																																																																																																																		
-35	34587	31863	37312	7.88	1.4																																																																																																																																																																																																																																																		
-30	26176	24194	28158	7.57	1.4																																																																																																																																																																																																																																																		
-25	19991	18536	21446	7.28	1.4																																																																																																																																																																																																																																																		
-20	15401	14323	16479	7.00	1.4																																																																																																																																																																																																																																																		
-15	11964	11159	12769	6.73	1.4																																																																																																																																																																																																																																																		
-10	9368	8763	9974	6.47	1.3																																																																																																																																																																																																																																																		
-5	7392	6932	7851	6.21	1.3																																																																																																																																																																																																																																																		
0	5875	5524	6226	5.97	1.3																																																																																																																																																																																																																																																		
5	4702	4432	4972	5.74	1.3																																																																																																																																																																																																																																																		
10	3788	3580	3997	5.52	1.3																																																																																																																																																																																																																																																		
15	3072	2909	3235	5.30	1.3																																																																																																																																																																																																																																																		
20	2505	2378	2633	5.09	1.3																																																																																																																																																																																																																																																		
25	2057	1956	2158	4.89	1.3																																																																																																																																																																																																																																																		
30	1698	1618	1777	4.69	1.2																																																																																																																																																																																																																																																		
35	1409	1345	1472	4.50	1.2																																																																																																																																																																																																																																																		
40	1175	1124	1226	4.32	1.2																																																																																																																																																																																																																																																		
45	985	944	1026	4.14	1.2																																																																																																																																																																																																																																																		
50	830	797	863	3.97	1.2																																																																																																																																																																																																																																																		
55	702	676	729	3.80	1.2																																																																																																																																																																																																																																																		
60	597	575	619	3.64	1.2																																																																																																																																																																																																																																																		
65	510	492	527	3.48	1.1																																																																																																																																																																																																																																																		
70	437	422	451	3.33	1.1																																																																																																																																																																																																																																																		
75	376	364	388	3.18	1.1																																																																																																																																																																																																																																																		
80	325	315	334	3.04	1.0																																																																																																																																																																																																																																																		
85	281	273	290	2.90	1.0																																																																																																																																																																																																																																																		
90	245	238	252	2.76	1.0																																																																																																																																																																																																																																																		
95	214	208	219	2.63	1.0																																																																																																																																																																																																																																																		
100	187	183	192	2.50	1.0																																																																																																																																																																																																																																																		
105	165	160	169	2.63	1.0																																																																																																																																																																																																																																																		
110	145	141	149	2.75	1.1																																																																																																																																																																																																																																																		
115	128	125	132	2.87	1.2																																																																																																																																																																																																																																																		
120	114	110	117	2.98	1.2																																																																																																																																																																																																																																																		
125	101	98	104	3.10	1.3																																																																																																																																																																																																																																																		
130	90	87	93	3.21	1.4																																																																																																																																																																																																																																																		
135	80	78	83	3.31	1.5																																																																																																																																																																																																																																																		
140	72	70	75	3.42	1.6																																																																																																																																																																																																																																																		
145	65	62	67	3.52	1.7																																																																																																																																																																																																																																																		
150	58	56	60	3.62	1.7																																																																																																																																																																																																																																																		
<div style="display: flex; justify-content: space-between;"> <div style="width: 25%;"> <p style="text-align: center;">EXA THERMOMETRICS AN AMPHENOL COMPANY</p> </div> <div style="width: 20%;"> </div> <div style="width: 15%;"> <p>SCALE NTS</p> <p>UNITS mm</p> <p>SHEET 2 OF 2</p> </div> <div style="width: 20%;"> <p>DRAWING NO: TP/A/22700</p> <p>PART NAME: TEMPERATURE SENSOR</p> <p>ExTI PART NO: I-2585</p> </div> <div style="width: 20%;"> <p>CUSTOMER: ----</p> <p>CUST. PART NO.: ----</p> <p>SPECIAL CHARACTERISTICS</p> </div> <div style="width: 20%;"> <table border="1" style="width:100%; border-collapse: collapse; font-size: 0.7em;"> <tr> <th colspan="10">TOLERANCES UNLESS SPECIFIED</th> </tr> <tr> <th>OVER</th> <th>-</th> <th>6</th> <th>30</th> <th>120</th> <th>315</th> <th>1000</th> <th>2000</th> <th>ANGLE (°)</th> <th></th> </tr> <tr> <td>UP TO</td> <td>6</td> <td>30</td> <td>120</td> <td>315</td> <td>1000</td> <td>2000</td> <td>-</td> <td>RIGHT</td> <td>1</td> </tr> <tr> <td>±</td> <td>0.1</td> <td>0.15</td> <td>0.2</td> <td>0.3</td> <td>0.4</td> <td>1.0</td> <td>2.0</td> <td>OTHER</td> <td>1.5</td> </tr> </table> </div> </div>								TOLERANCES UNLESS SPECIFIED										OVER	-	6	30	120	315	1000	2000	ANGLE (°)		UP TO	6	30	120	315	1000	2000	-	RIGHT	1	±	0.1	0.15	0.2	0.3	0.4	1.0	2.0	OTHER	1.5																																																																																																																																																																																																								
TOLERANCES UNLESS SPECIFIED																																																																																																																																																																																																																																																							
OVER	-	6	30	120	315	1000	2000	ANGLE (°)																																																																																																																																																																																																																																															
UP TO	6	30	120	315	1000	2000	-	RIGHT	1																																																																																																																																																																																																																																														
±	0.1	0.15	0.2	0.3	0.4	1.0	2.0	OTHER	1.5																																																																																																																																																																																																																																														
<p>The copyright of this Specification / Drawing is the property of Exa Thermometrics and it is issued on the condition that it is not to be copied / reprinted or stored in any electronic retrieval system nor its contents disclosed either wholly or in part to any third party without the consent in writing or with the conditions of a contract .</p>																																																																																																																																																																																																																																																							
4		3		2		1																																																																																																																																																																																																																																																	