

## Greetech

### G6

#### ミニチュアマイクロスイッチ/Miniature Micro Switch

##### ■特長 Features

- ◆ 小型コンパクトサイズ長寿命、高信頼性
- ◆ 世界的な安全認証
- ◆ 長寿命・高信頼性
- ◆ 多彩なアクチュエーターと端子類
- ◆ 10(2)A までの高定格、1/4HP
- ◆ カスタム
- ◆ 自動車制御、家電制御、産業制御などで広く使用されています。
- ◆ Small Compact Size
- ◆ Global safety approvals
- ◆ Long life and high reliability
- ◆ Variety of Actuator and Terminals
- ◆ High Rating to 10(2)A, 1/4HP
- ◆ Customized Designs
- ◆ Widely used in Auto Control, Appliance Control, Industrial Control etc.

##### ■応用 Application

- ◆ 電話機/FAX
- ◆ エアコン
- ◆ PC
- ◆ 加湿器
- ◆ アラーム/タイマー
- ◆ フードプロセッサ
- ◆ 溶接機
- ◆ ゲームコントローラー
- ◆ ポンプ
- ◆ ガス検知器
- ◆ 照明器具
- ◆ Phone/Fax Machine
- ◆ Air-Conditioner
- ◆ Computer
- ◆ Humidifier
- ◆ Alarm/Timer
- ◆ Food Processor
- ◆ Welding Machine
- ◆ Game Controller
- ◆ Pump
- ◆ Gas Detector
- ◆ Lighting Equipment

##### ■パラメーター Parameters

定格 / Rating	P1/P11/P12	ENEC:0.1A 125 / 250V 48VDC 5E4 UL: 0.1A 125 / 250VAC 48VDC 金メッキ接点はオプション/ Gold Plated Contact Optional
	05/051/052	ENEC: 5A 125 / 250V 5(3)A 125/250VAC 5A 30VDC UL: 5A 1/8 HP 125/250VAC
	10/101	ENEC: 10(2)A 125 / 250V $\mu$ 25T125 UL: 10.1A 1/4 HP 125/250VAC Note; "250gf" / Only with "OF" over "250gf"
	12	ENEC: 12(6)A 125 / 250V $\mu$ 40T125 UL: 12A 125/250VAC Note; "350gf" / Only with 350gf OF
動作頻度 / Operating Frequency	Electrical	10~30 cycles/minute
	Mechanical	120 cycles/minute
接点抵抗 / Contact Resistance(Initiative)		100m $\Omega$ Max
絶縁抵抗 / Insulation Resistance (at 500VDC)		100m $\Omega$ Min
/ Dielectric Strength		AC 1,000V RMS (50~60Hz)
保管温度 / Storage Temperature		-25° ~+125°C
保管湿度 / Storage Humidity		85%RH Max
寿命 / Service Life	電氣的/Electrical	10,000~50,000cycles(Depends on part No.)
	機械的/Mechanical	1,000,000cycles

**G6系列微动开关订货型号指引**  
**G6 Series Micro Switch Ordering Instruction**

G6	05	150	S	00	A	A	TXXX
开关类别 Switch Type	额定负载 Electrical Rating	操作力 (最大值) 数据在不带操作柄测得 Max Operating Force at pin Plunger	端子类型 Terminal Style	操作柄类型 Lever Type	接触形式 Circuit Code	特别设计代码 Special Designator	特别设计代码 Special Designator
G6系列 微动开关 G6 series micro switch	P1 ENEC/CQC: 0.1A 125/250VAC 48VDC 5E4 μ 25T125 UL: 0.1A 125/250VAC 48VDC 触点可选镀金/Gold plated contact optional	50 50gf 0.49N (仅适用于0.1A 电流/Only for 0.1A rating)	S 焊接端子 Solder Terminals	00 不带操作柄 柱式按拳 No Lever PinPlunger	A SPDT 单极双投	通用型 General	此处为特别设计 代码,具体请参 考产品规格来 确定详细的差别 Here means a special designator letter. Refer to Products Specification for detailed differences.
	05 ENEC/CQC: 5A 125/250VAC 30VDC 5E4 μ 25T125 UL: 5A 1/8HP125/250VAC 30VDC	100 (仅适用于0.1A和 5A电流/Only for 0.1A and 5A rating)	P 直PCB端子 Straight PCB Terminals	01 短直柄16.7mm Short Straight Lever 0.66"	B SPST-NC 单极单投 常闭	A 触点镀金(可选,仅适 用于G6P1系列) Gold Plated Contacts(Optional, only for G6P1)	
	10 ENEC/CQC: 10(2)A 125/250VAC μ 25T125 UL: 10.1A 1/4HP 125/250VAC 备注:10A的额定电流的开关 的操作力仅有250gf Note:Switch 10"rating is only available with OF over 250gf	150 (Note:For G6P1, G6051, G610 1, Max. OF is 150gf)	R 右侧面PCB端子 Right side PCB Terminals (Note:仅适用于 G6P1, G605, G610) Only available for G6P1, G605, G610)	02 标准直柄 18.7mm Std. Straight Lever 0.74"	C SPST-NO 单极单投 常开	D 特别用于大电 流直流负载 High DC Rating Special use	
	12 ENEC/CQC: 12(6)A 125/250VAC, μ 40T125 UL: 12A 125/250VAC 操作力仅适用于350gf OF only with 350gf	250 (Note: Only available for G6P1, G605, G610)	L 左侧面PCB端子 Left side PCB Terminals (Note:仅适用于 G6P1, G605, G610) Only available for G6P1, G605, G610)	03 长直柄 24.8mm Long Straight Lever 0.98"	...	其他 Other	
	P11 ENEC/CQC: 0.1A 125/250VAC 48VDC 5E4 μ 25T125 UL: 0.1A 125/250VAC 48VDC 触点可选镀金/Gold plated contact optional 弹片式 spring plate type	350 主要适用于 G612/mainly for G612	D 110# 快速非标连接端子 2.80x0.6mm quick connect Terminals 0.11x0.023"	04 更长直柄 35.1mm Longer Straight Lever 1.39"			
	051 ENEC/CQC: 5A 125/250VAC 5E4 μ 25T125 UL/CUL: 5A 1/8HP 125/250VAC 弹片式 spring plate type	F 特殊操作力 Special OF	E 110# 快速连接端子 2.80x0.5mm quick connect Terminals 0.11x0.023"	05 模拟滚轮手柄 18.0mm Std. Simulated Roller Lever 0.71"			
	101 ENEC/CQC: 10(2)A 125/250VAC μ 25T125 UL: 10.1A 1/4HP 125/250VAC 备注:10A的额定电流的开关 的操作力仅有150gf Note:Switch with 10"rating are only available with 150"OF 弹片式 spring plate type		...	06 带滚轮手柄 16.6mm Roller Lever 0.65"			
	P12 ENEC/CQC: 0.1A 125/250VAC 48VDC 5E4 μ 25T85 UL: 0.1A 125/250VAC 48VDC 触点可选镀金/Gold plated contact optional 电木外壳 bakelite 弹片式 spring plate type			07 小型模拟滚轮手柄 17.9mm Small Simulated Roller Lever 0.71"			
	052 ENEC/CQC: 5A 125/250VAC 5E4 μ 25T85 UL: 5A 1/8HP 125/250VAC 电木外壳 bakelite housing 弹片式 spring plate type			09 塑胶滚轮手柄 Plastic Roller Lever ...		其他 Other	

## ■ 安装孔尺寸/Mounting Hole Dimensions

焊接、110#端子 Solder and 110# Terminal	直PCB端子 Straight PCB Terminal	右侧面PCB端子 Right Angled PCB Terminal	左侧面PCB端子 Left Angled PCB Terminal

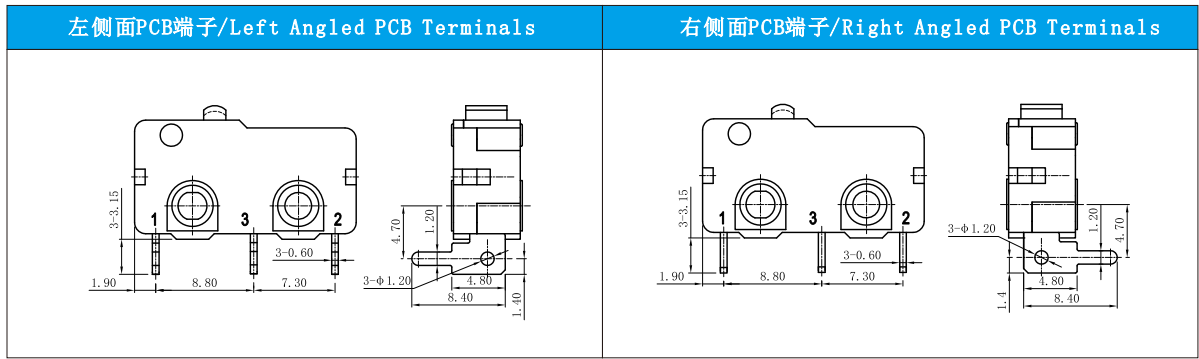
## ■ 接触形式图/Circuit Configuration

A#SPDT	B#SPST-NC	C#SPDT-NO

## ■ 接线端子尺寸/Terminal Dimensions

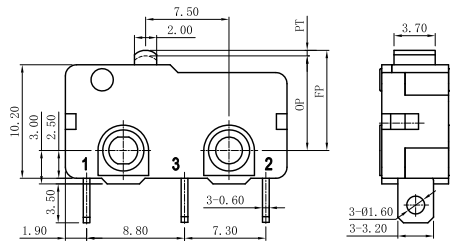
(单位/Unit:mm)

焊线端子/Solder Terminals	直PCB端子/Straight PCB Terminals
非标快接端子 (厚0.6mm)/Quick Connect Terminals (Thickness:0.6mm)	快接端子 (厚0.5mm)/Quick Connect Terminals (Thickness:0.5mm)



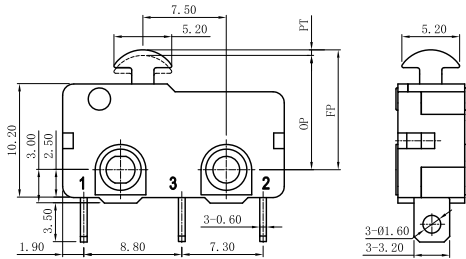
**■外形尺寸和操作特性/Dimensions and Operating Characteristics**

◆G6□□-□□□S00A



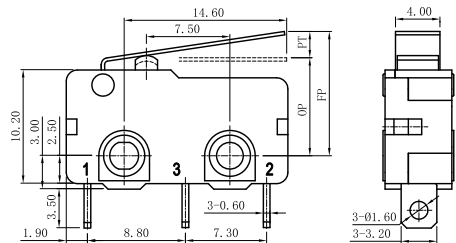
OF Max (gf)	RF Min (gf)	PT Max (mm)	OT Min (mm)	DT Max (mm)	FP Max (mm)	OP (mm)
-100	100	10	1.0	0.4	0.2	9.1
-150	150	35	1.0	0.4	0.2	9.1
-250	250	50	1.0	0.4	0.2	9.1
-350	350	80	1.0	0.4	0.2	9.1

◆G6□□-□□□S00A-B3



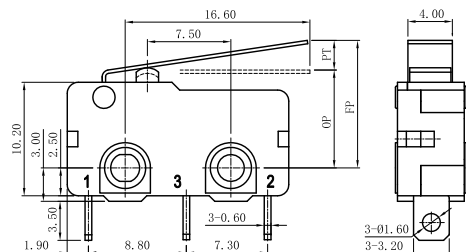
OF Max (gf)	RF Min (gf)	PT Max (mm)	OT Min (mm)	DT Max (mm)	FP Max (mm)	OP (mm)
-100	100	10	1.0	0.4	0.2	10.9
-150	150	35	1.0	0.4	0.2	10.9
-250	250	50	1.0	0.4	0.2	10.9

◆G6□□-□□□S01A



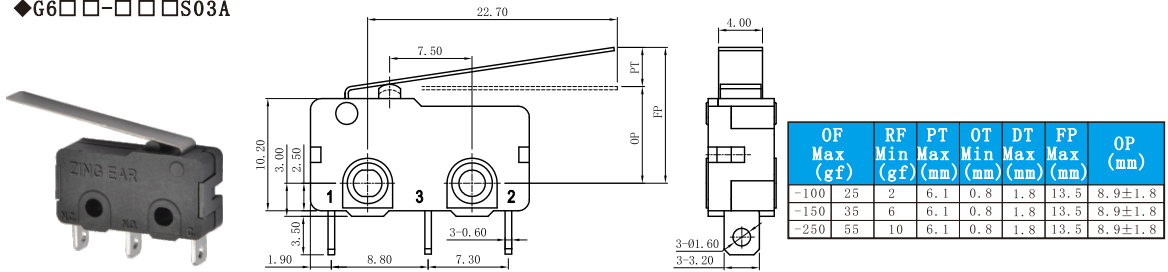
OF Max (gf)	RF Min (gf)	PT Max (mm)	OT Min (mm)	DT Max (mm)	FP Max (mm)	OP (mm)
-100	40	6	3.6	0.6	1.0	11.7
-150	50	8	3.6	0.6	1.0	11.7
-250	80	15	3.6	0.6	1.0	11.7
-350	110	30	3.6	0.6	1.0	11.7

◆G6□□-□□□S02A

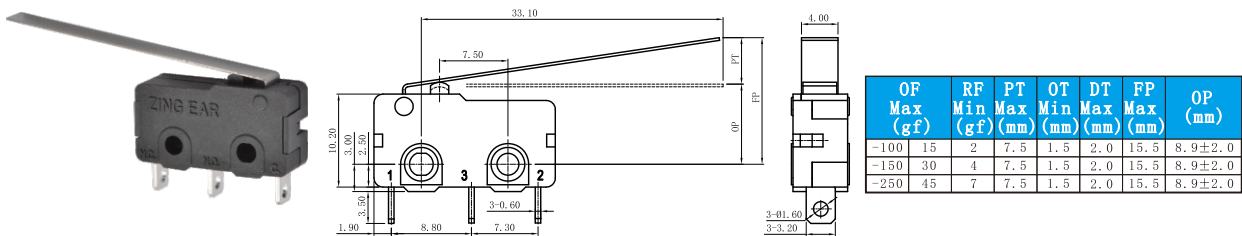


OF Max (gf)	RF Min (gf)	PT Max (mm)	OT Min (mm)	DT Max (mm)	FP Max (mm)	OP (mm)
-100	35	5	4.0	0.6	1.0	12.0
-150	45	6	4.0	0.6	1.0	12.0
-250	75	10	4.0	0.6	1.0	12.0
-350	100	20	4.0	0.6	1.0	12.0

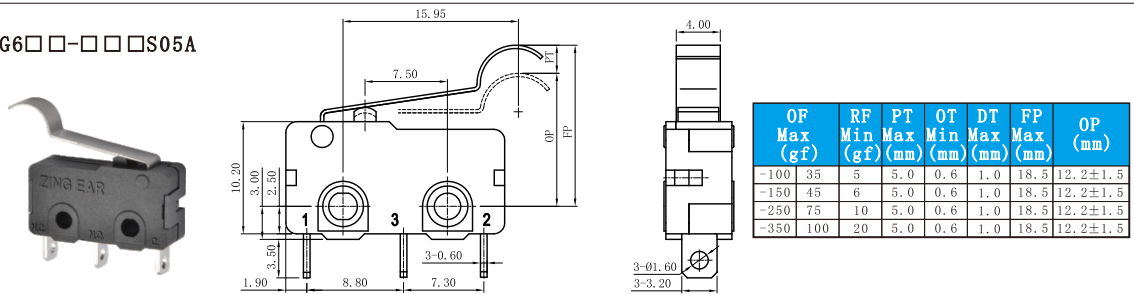
## ◆G6□□-□□□S03A



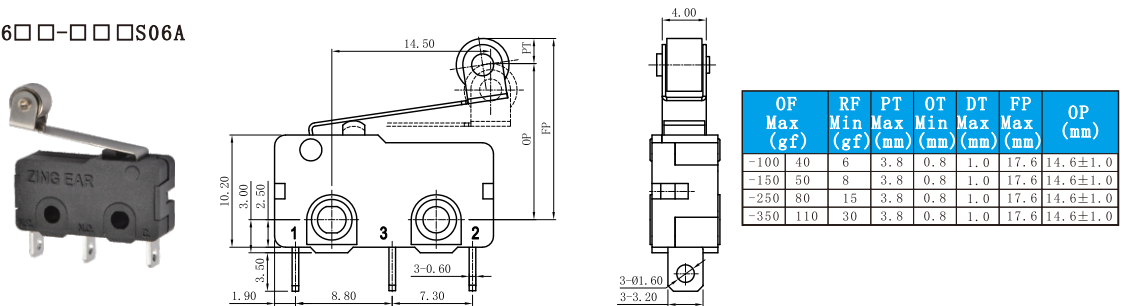
## ◆G6□□-□□□S04A



## ◆G6□□-□□□S05A



## ◆G6□□-□□□S06A



## ◆G6□□-□□□S07A

